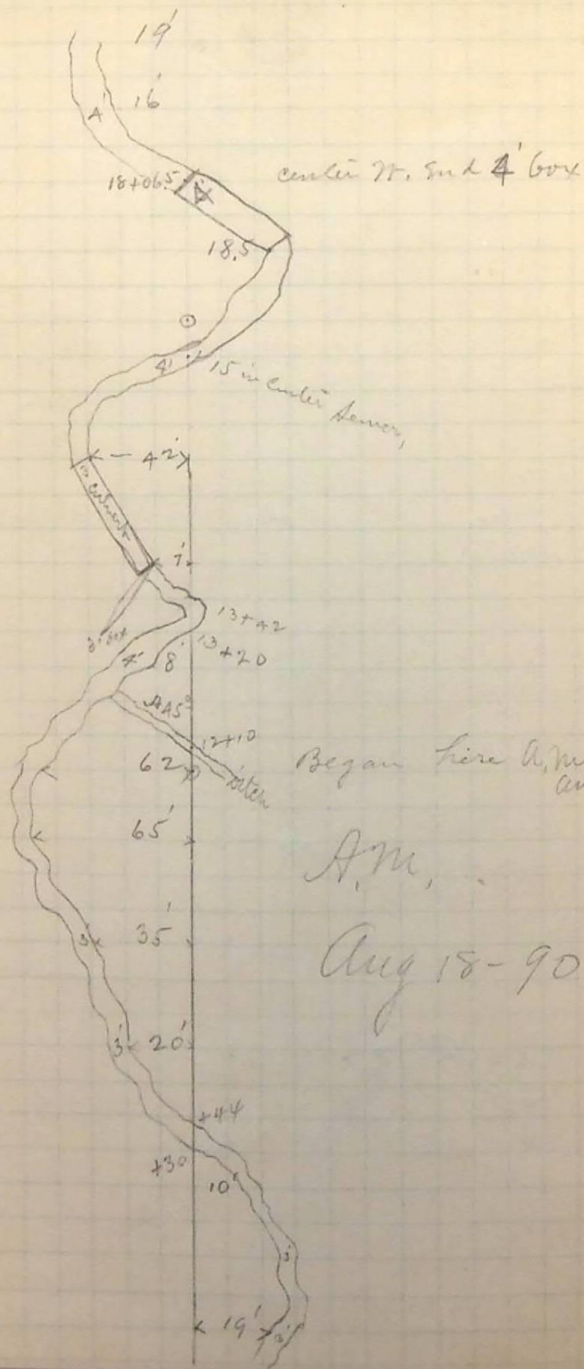


Meander 24th St Survey

17
 16+25
 16+06.5
 15+81
 15+60 S. B. 13°
 15
 14
 13+52
 13
 12 N. 2. 50°
 11+80
 11
 10
 +44
 +30
 9
 8



Meander 24th St 34

Survey

26+61.5 S. 2. 5°30'

26+15 about over center of Meander

24+07 lose lower line

24
 23+85
 23+55
 +35
 23+30
 23+23
 23+15 S. 2. 42°40'
 23
 22
 14'
 21
 21'
 20
 29'
 19
 25'
 18
 28'
 17
 19'

